

LEBLANC LE STUDIO

VISUAL CREATION - SET DESIGN - ART DIRECTION

CONTACT :
JEAN-CHRISTOPHE LEBLANC
+33 6 78 97 79 50
project@leblanclestudio.com

DIOR - EXPOSITION ITINÉRENTE 2024/25
TOKYO. SEOUL. SHANGHAI



DIOR - PRÊT-À-PORTER P-E 2023
JARDIN DES TUILERIES. PARIS





MURDER MISTERY 2 (2023)
DÉCOR MARIAGE INDIEN. NETFLIX



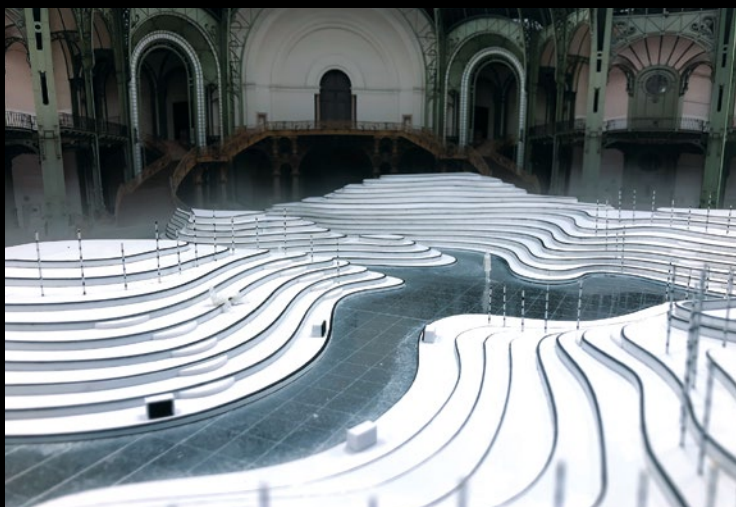






CHANEL - PRÊT-À-PORTER A-H 2020/21
GRAND PALAIS. PARIS





CHANEL - MÉTIERS D'ART 2019/20
GRAND PALAIS. PARIS









CHANEL - HAUTE COUTURE A-H 2019/20
GRAND PALAIS. PARIS



CHANEL - CROISIÈRE 2019/20
MINE GRAPHITE - MAQUETTE S 50^{ème}



CHANEL - CROISIÈRE 2019/20
GRAND PALAIS. PARIS





CHANEL - PRÊT-À-PORTER A-H 2019/20
GRAND PALAIS - PARIS

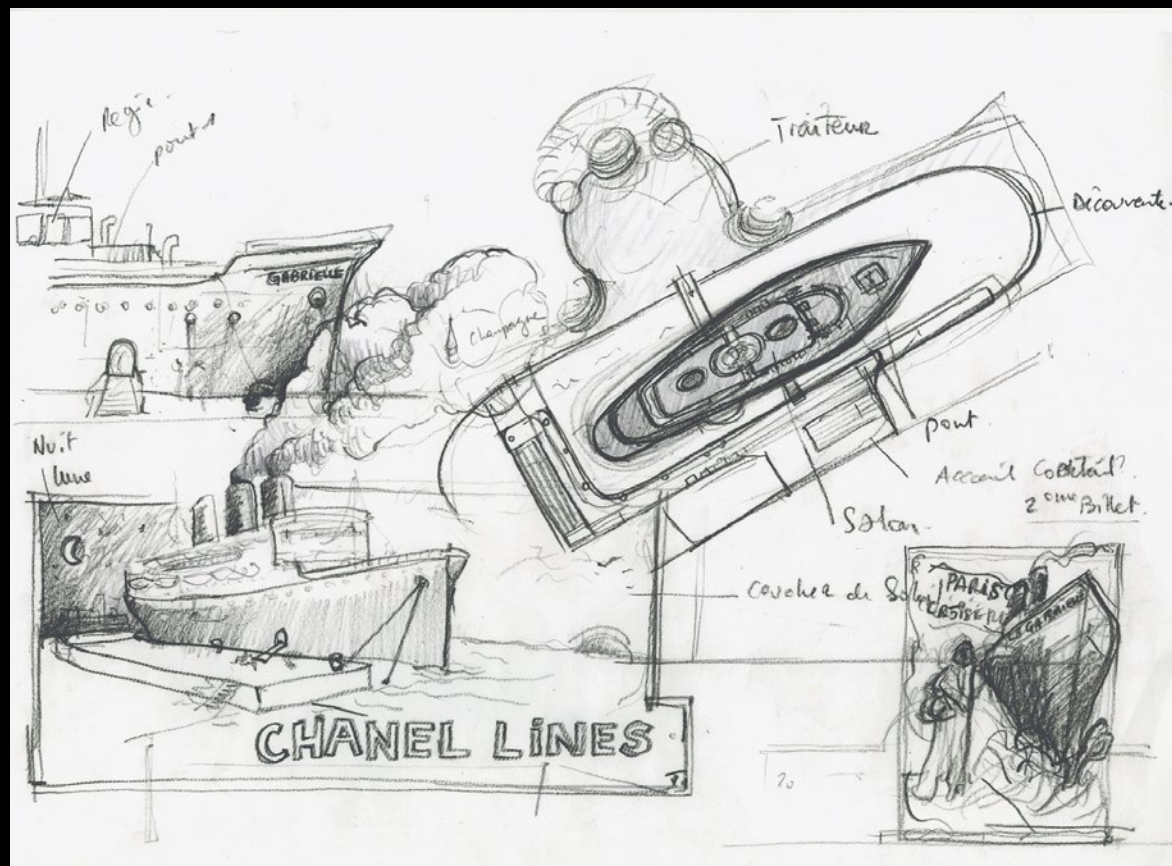


CHANEL - PRÊT-À-PORTER P-E 2019
GRAND PALAIS. PARIS
MAQUETTE 50^{ème}

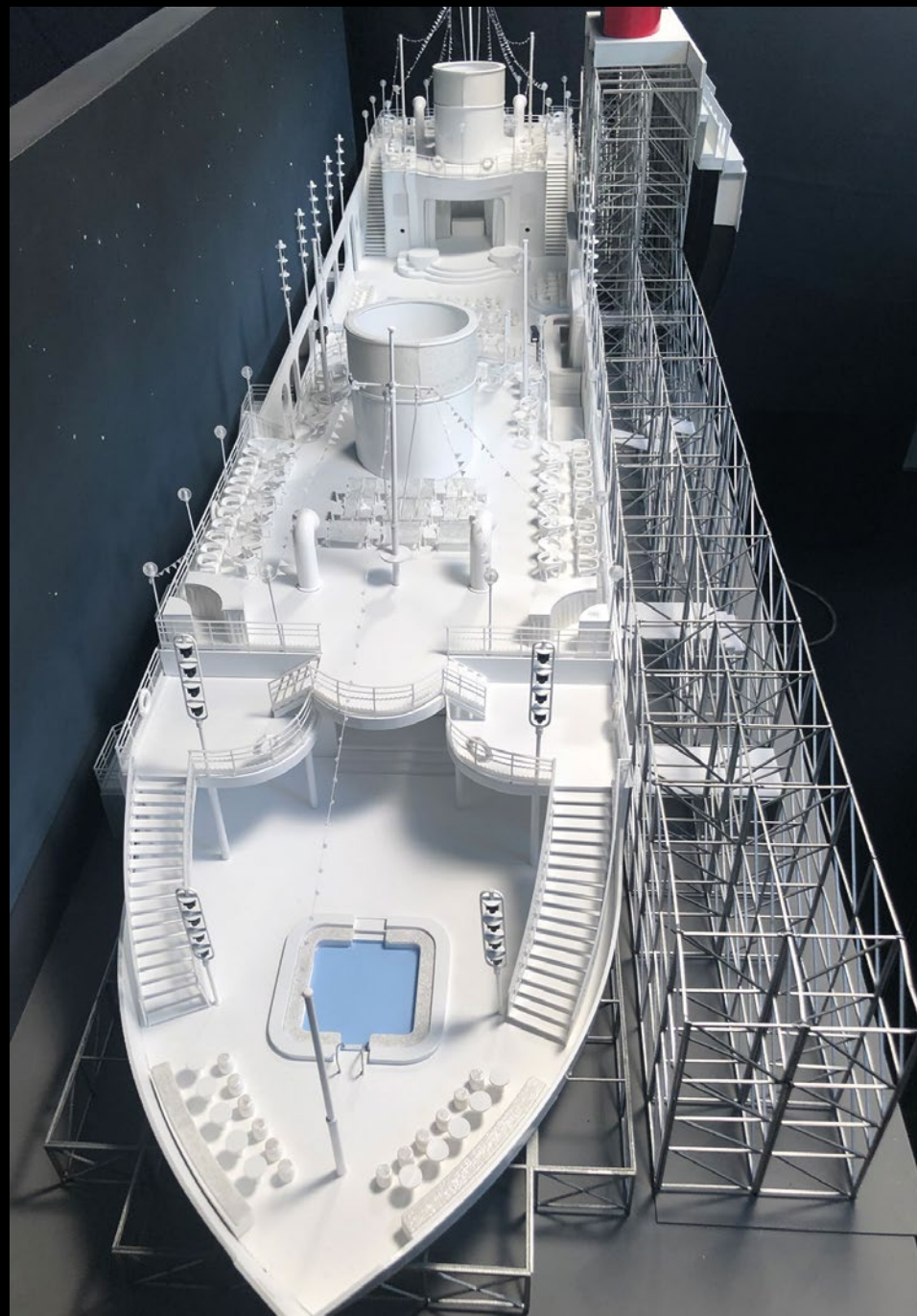
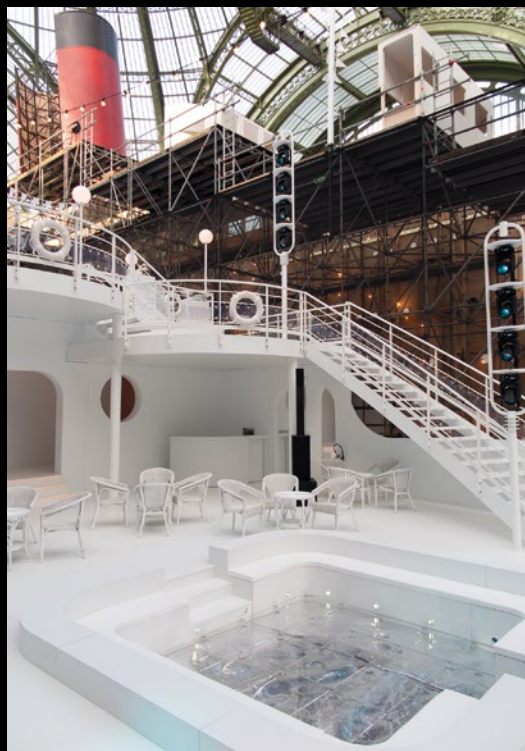


CHANEL - CROISIÈRE 2023
GRAND PALAIS. PARIS





DÉCOR SOIRÉE
MAQUETTE 50^{ème}



CHANEL - PRÊT-A-PORTER 2018/19
GRAND PALAIS. PARIS



CHANEL - HAUTE COUTURE A-H 2017/18
GRAND PALAIS, PARIS





CHANEL - PRÊT-À-PORTER P-E 2018
GRAND PALAIS, PARIS

DÉCOR GRAND PALAIS - PARIS



MAQUETTES 50^{ème} - MINE GRAPHITE



CHANEL - CROISIÈRE 2017/18
GRAND PALAIS. PARIS



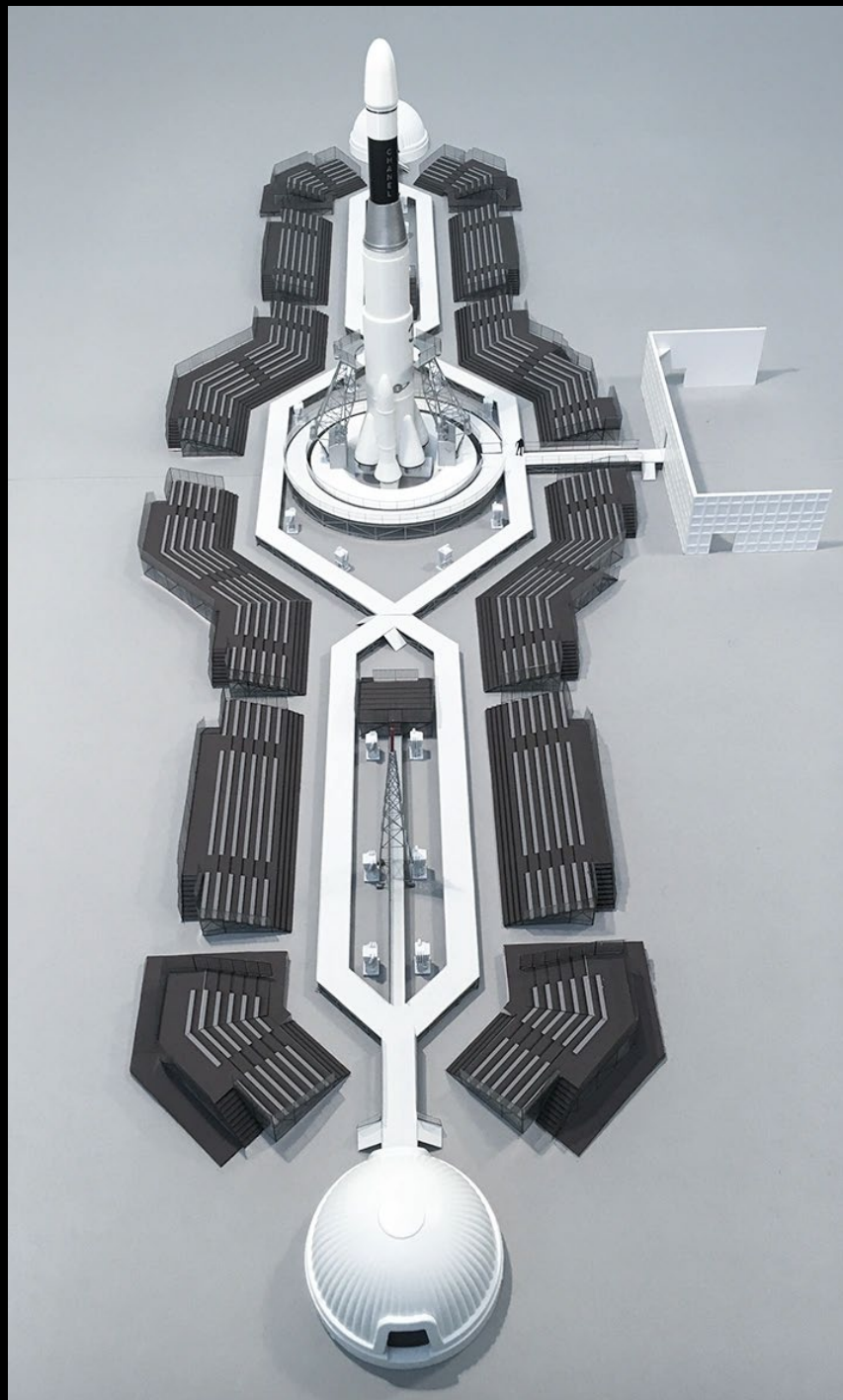
MAQUETTE 50^{ème}



CHANEL - PRÊT-À-PORTER A-H 2017/18
GRAND PALAIS, PARIS



MAQUETTE 50^{ème}



CHANEL - MÉTIERS D'ART 2015/16
ROME





MAQUETTE 50^{ème}







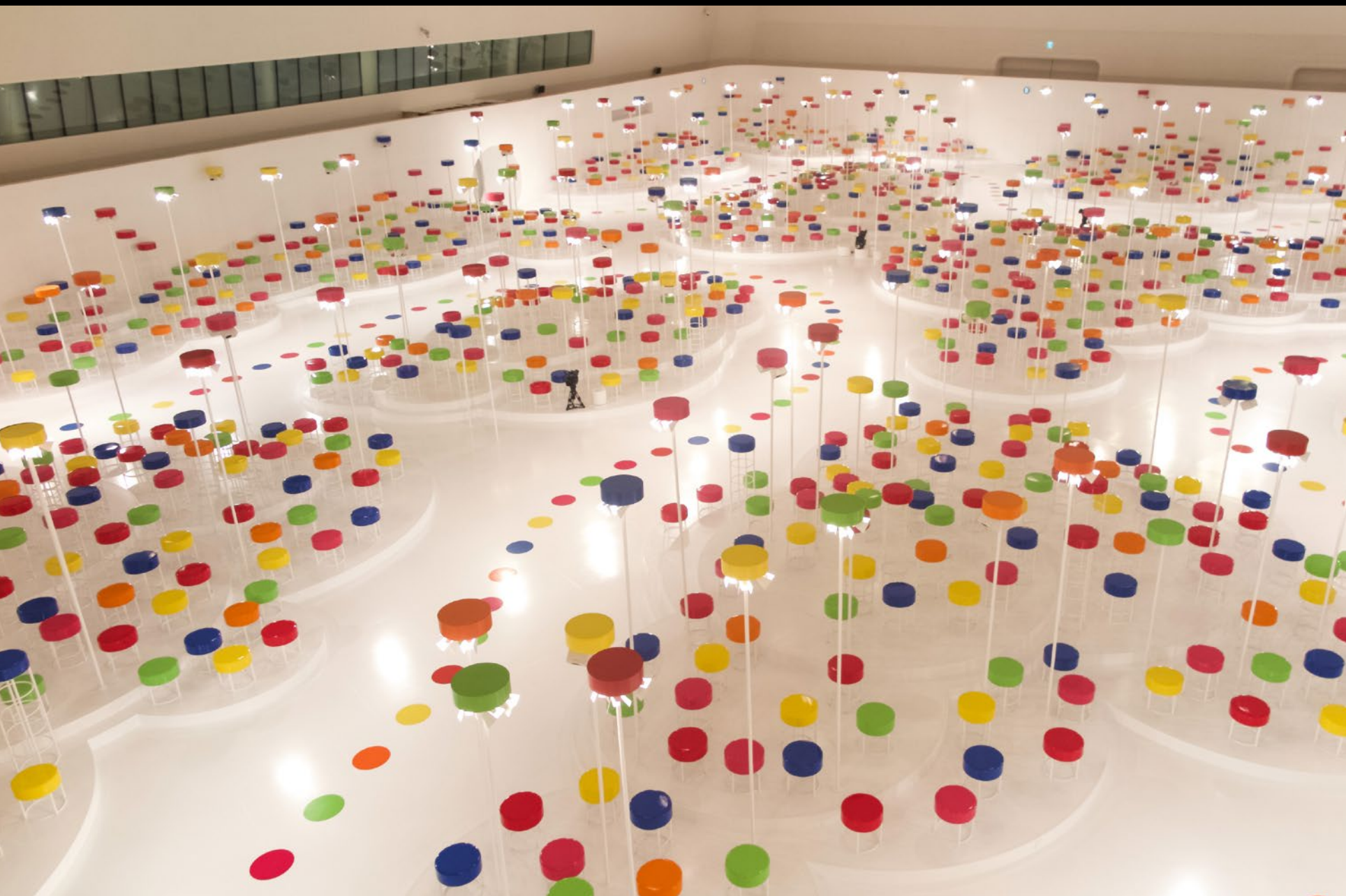
CHANEL - HAUTE COUTURE A-H 2015/16
GRAND PALAIS. PARIS

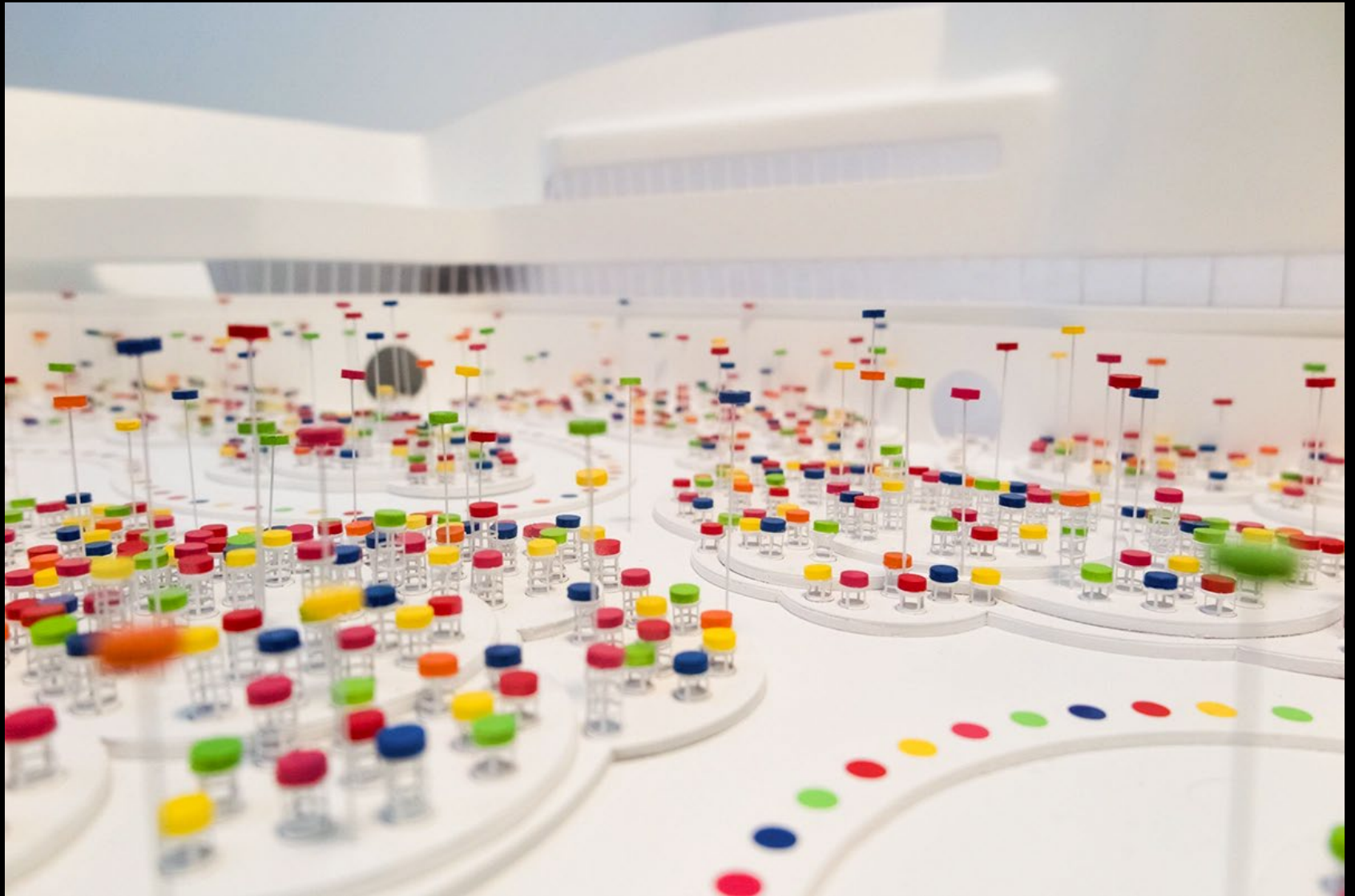




CHANEL - CROISIÈRE 2015/16

DÉFILÉ - DONGDAEMUN DESIGN PLAZA, CORÉE





CHANEL - CROISIÈRE 2015/16

SOIRÉE - DONGDAEMUN DESIGN PLAZA, CORÉE



MAQUETTE 10^{ème} - LAITON, TULLE, COTON

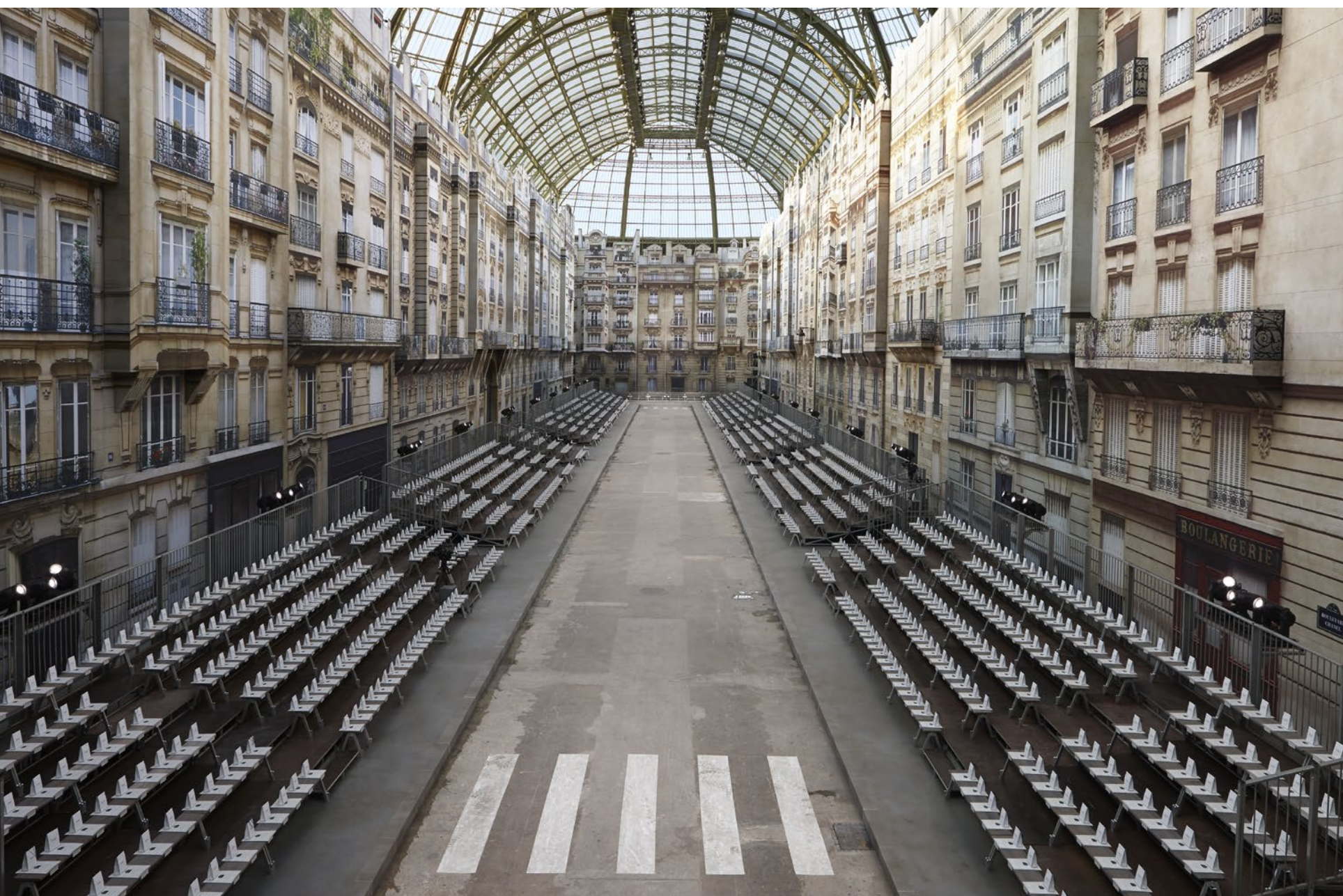


CHANEL - HAUTE COUTURE P-E 2015
GRAND PALAIS. PARIS





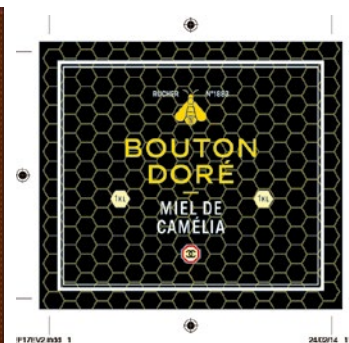
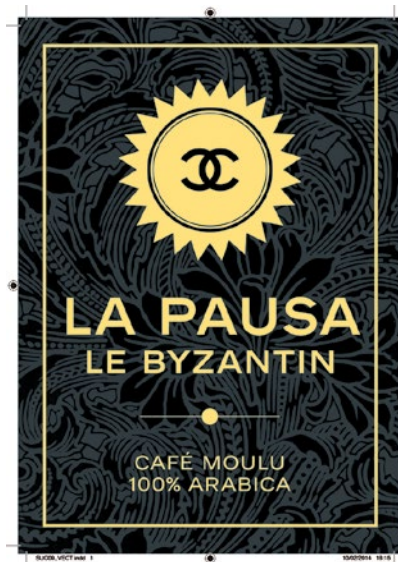
CHANEL - PRÊT-À-PORTER P-E 2015
GRAND PALAIS. PARIS



CHANEL - PRÊT-À-PORTER A-H 2014/15
GRAND PALAIS. PARIS









CHANEL - HAUTE COUTURE A-H 2013/14
GRAND PALAIS. PARIS





CHANEL - HAUTE COUTURE P-E 2013
GRAND PALAIS. PARIS



MAQUETTES 50^{ème}



HAUTE COUTURE AUTOMNE/HIVER 2012/2013
GRAND PALAIS. PARIS



©Olivier Saillant



MINE GRAPHITE



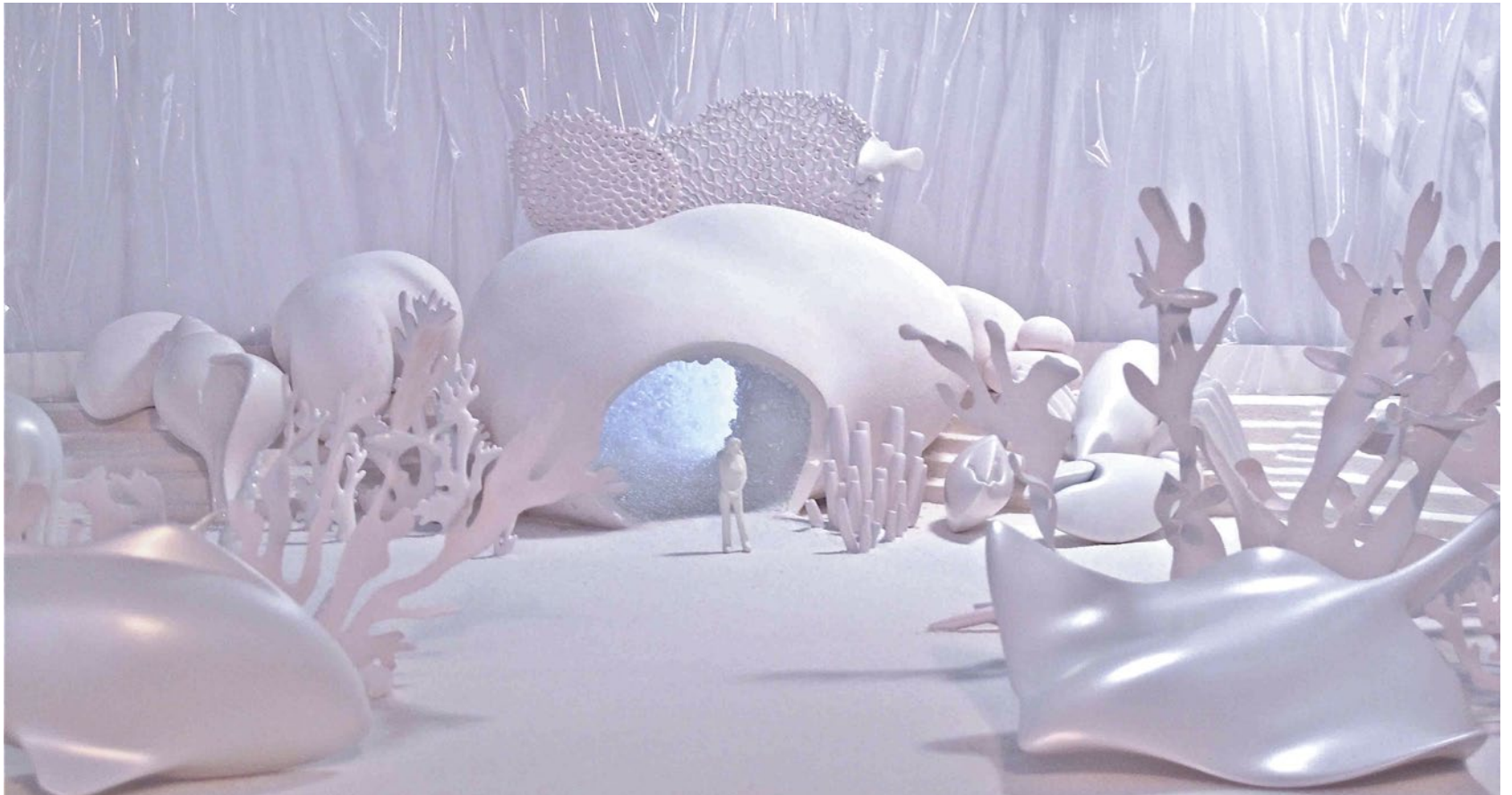
CHANEL - PRÊT-À-PORTER A-H 2012/13
GRAND PALAIS. PARIS





CHANEL - PRÊT-À-PORTER P-E 2012
GRAND PALAIS. PARIS



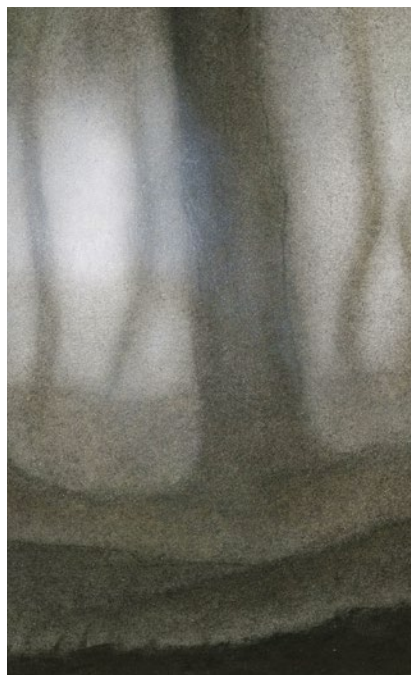


CHANEL - PRÊT-À-PORTER A-H 2011/12
GRAND PALAIS. PARIS





MINE GRAPHITE ET FUSAIN



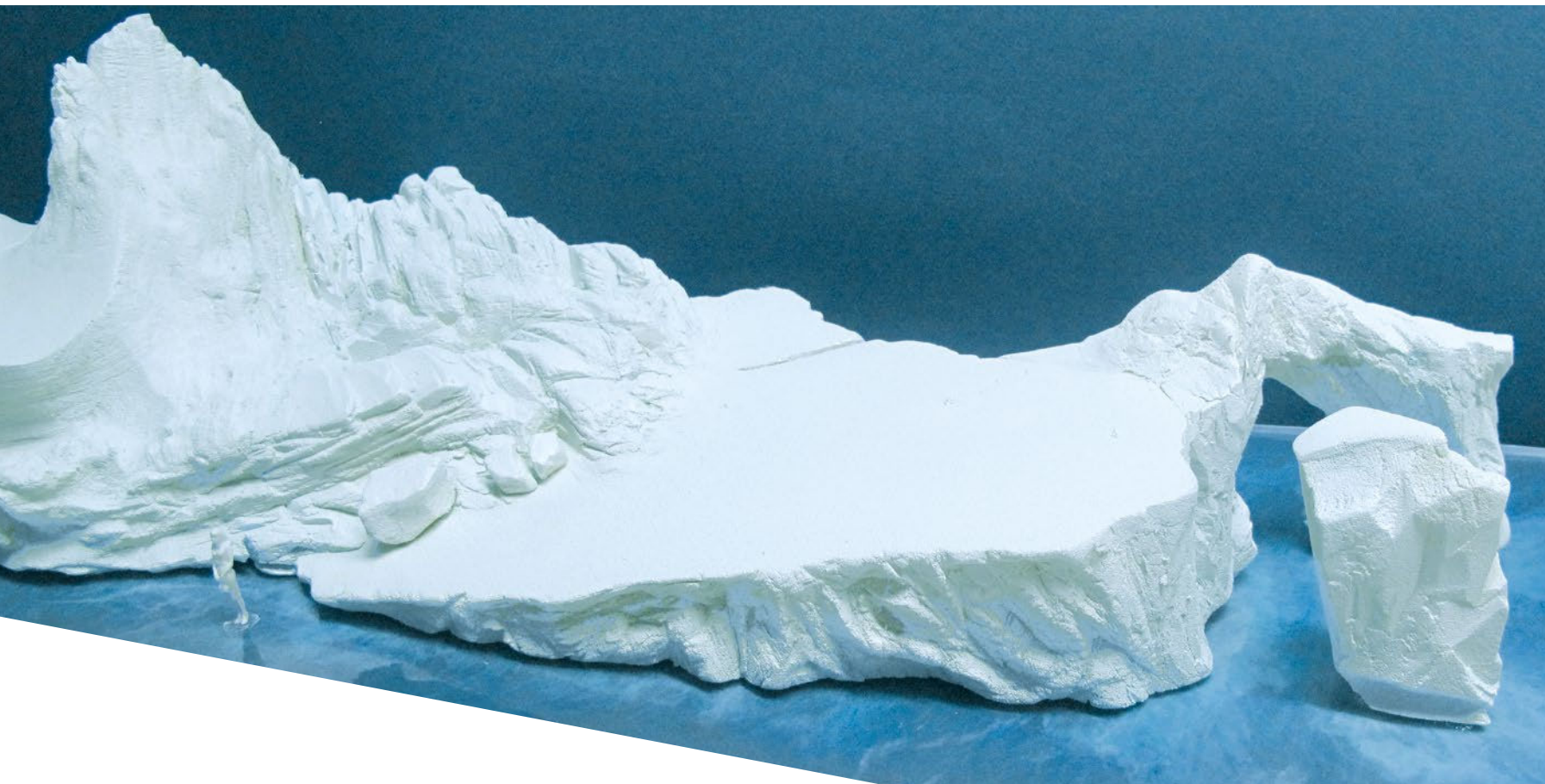
CHANEL - PRÊT-À-PORTER P-E 2011
GRAND PALAIS. PARIS





CHANEL - PRÊT-À-PORTER A-H 2010/11
GRAND PALAIS. PARIS





CHANEL - COURT MÉTRAGE - ONCE UPON A TIME
DÉFILÉ SINGAPOUR 2013/2014





MINE GRAPHITE

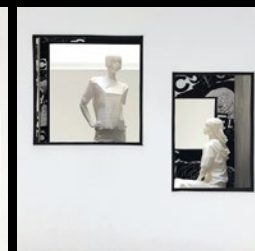
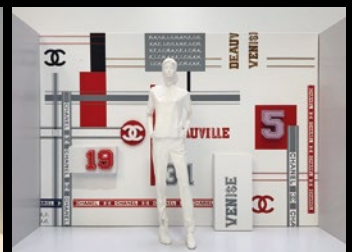
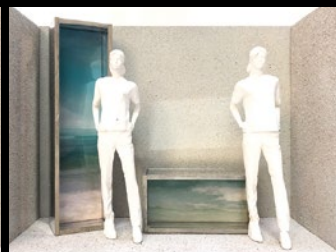
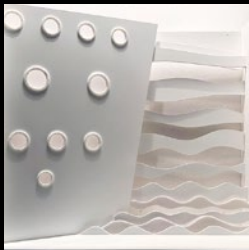
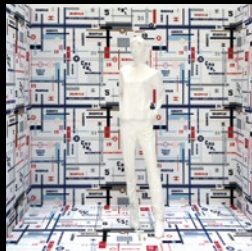




CHANEL - VITRINES

MAQUETTES 10^{ème}





50 ANS DU SILMO - 2017
L'OEIL. COLLABORATION AVEC ROMAIN TARDY



